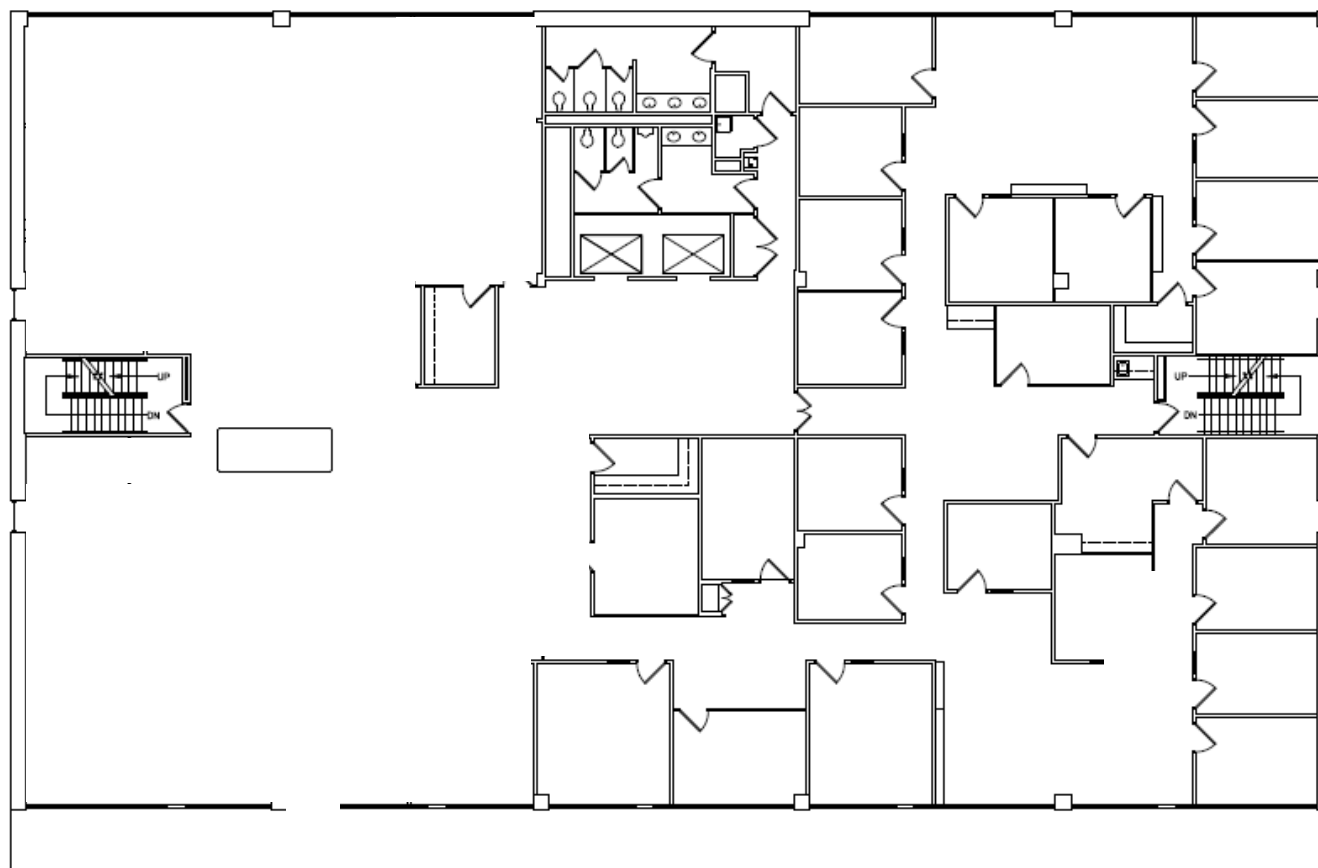




**kinslow, kelih & todd, inc.**  
architecture / interior / engineer

tel: 918.744.421  
fax: 918.744.781  
2200 south ulsa place, suite 1  
tulsa, oklahoma 741  
www.kktarchitects.com



**6TH FLOOR**

201  
EXECUTIVE  
CENT

KANE  
PROPE

SCALE	N
FILE NAME	2016th
MANAGER	
DRAWN BY	
10-12-10	

**A FLOOR PLAN**   
SCALE: N.T.S. NORTH

**11,990 RSF**

AS-BUILT  
PLAN  
**AS-1**